
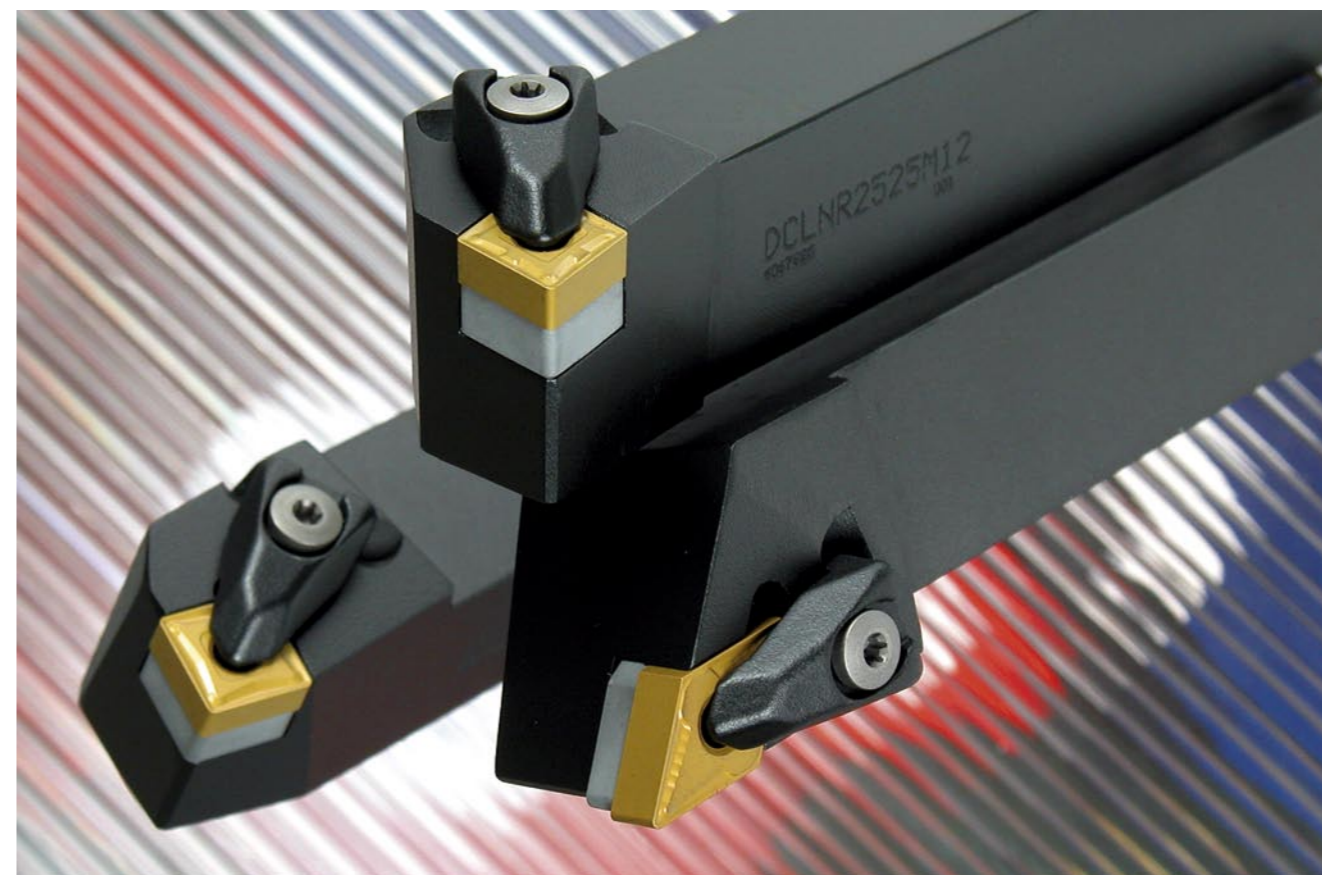


for external and internal turning  
**Clamping system** 



# safe clamping



Excellent stability  
and high accuracy of clamping  
Easy change of cutting insert even on machine  
The same screwdriver for insert and shim

for external and internal turning  
**Clamping system** 

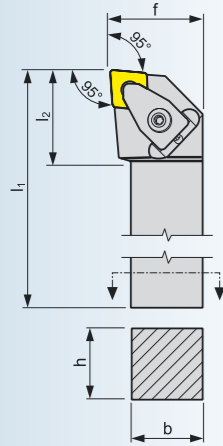


**Pramet Tools, s.r.o., Unicovska 2, 787 53 Sumperk, Czech Republic**  
Phone: +420 / 583 381 111, 583 381 530-5, Fax: +420 / 583 215 401, E-mail: [pramet.info.cz@pramet.com](mailto:pramet.info.cz@pramet.com)

[www.pramet.com](http://www.pramet.com)



## DCLNR/L



$\gamma_0^\circ$  - cutting edge inclination  
 $\lambda_{s0}^\circ$  - tool orthogonal rake

### External turning - clamping system D

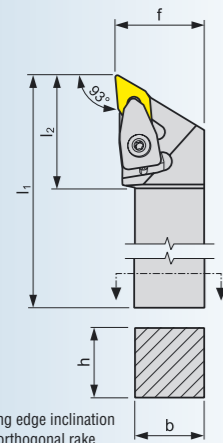


ISO	R/L	Dimensions						$\lambda_s^\circ$	$\gamma_0^\circ$	kg	Spare parts	Insert
		h	b	f	$l_1$	$l_{2max}$						
DCLNR/L 1616 H 09	●/●	16	16	20	100	25		-6	-6	0,2	DC09	CNM. 0903..-E
DCLNR/L 2020 K 09	●/●	20	20	25	125	25		-6	-6	0,4	DC09	CNM. 0903..-E
DCLNR/L 2525 M 09	●/●	25	25	32	150	25		-6	-6	0,7	DC09	CNM. 0903..-E
DCLNR/L 2020 K 12	●/●	20	20	25	125	30		-6	-6	0,4	DC12	CNM. 1204..-E
DCLNR/L 2525 M 12	●/●	25	25	32	150	30		-6	-6	0,7	DC12	CNM. 1204..-E
DCLNR/L 3225 P 12	●/●	32	25	32	170	30		-6	-6	1,0	DC12	CNM. 1204..-E
DCLNR/L 3225 P 16	●/●	32	25	32	170	35		-6	-6	1,0	DC16	CNM. 1606..-E
DCLNR/L 3232 P 19	●/●	32	32	40	170	40		-6	-6	1,3	DC19	CNM. 1906..-E
DCLNR/L 4040 R 19	●/●	40	40	50	200	40		-6	-6	2,4	DC19	CNM. 1906..-E

#### SPARE PARTS:

Spare parts	Shim	Shim screw	Clamp	Screw	Spring	Screwdriver
DC09	DCN 090412	MSD 5008-T09P	UD 09	SR 85017-T09P	PR 6912	SDR T09P
DC12	DCN 120612	MSD 6312-T15P	UD 12	SR 85020-T15P	PR 7616	SDR T15P
DC16	DCN 160412	MSD 8015-T20P	UD 16	SR 86025-T20P	PR 9118	SDR T20P
DC19	DCN 190412	MSD 1015-T20P	UD 19	SR 86025-T20P	PR 9118	SDR T20P

## DDJNR/L



$\gamma_0^\circ$  - cutting edge inclination  
 $\lambda_{s0}^\circ$  - tool orthogonal rake

### External turning - clamping system D

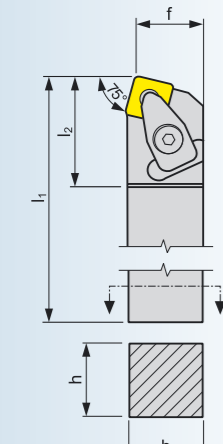


ISO	R/L	Dimensions						$\lambda_s^\circ$	$\gamma_0^\circ$	kg	Spare parts	Insert
		h	b	f	$l_1$	$l_{2max}$						
DDJNR/L 2020 K 15	●/●	20	20	25	125	40		-6	-6	0,4	DD15	DNM. 1506..-E
DDJNR/L 2525 M 15	●/●	25	25	32	150	40		-6	-6	0,7	DD15	DNM. 1506..-E
DDJNR/L 3225 P 15	●/●	32	25	32	170	40		-6	-6	1,00	DD15	DNM. 1506..-E

#### SPARE PARTS:

Spare parts	Shim	Shim screw	Clamp	Screw	Spring	Screwdriver
DD15	DDN 150412	MSD 6312-T15P	UD 12	SR 85020-T15P	PR 7616	SDR T15P

## DSBNR/L



$\gamma_0^\circ$  - cutting edge inclination  
 $\lambda_{s0}^\circ$  - tool orthogonal rake

### External turning - clamping system D



ISO	R/L	Dimensions						$\lambda_s^\circ$	$\gamma_0^\circ$	kg	Spare parts	Insert
		h	b	f	$l_1$	$l_{2max}$						
DSBNR/L 2525 M 12	●/●	25	25	22	150	35		-6	-6	0,7	DS12	SNM. 1204..-E
DSBNR/L 3225 P 15	●/●	32	25	22	170	40		-6	-6	1,0	DS15	SNM. 1506..-E
DSBNR/L 3232 P 19	●/●	32	32	27	170	45		-6	-6	1,3	DS19	SNM. 1906..-E
DSBNR/L 4040 R 19	●/●	40	40	35	200	45		-6	-6	2,4	DS19	SNM. 1906..-E

#### SPARE PARTS:

Spare parts	Shim	Shim screw	Clamp	Screw	Spring	Screwdriver
DS12	DSN 120612	MSD 6312-T15P	UD 12	SR 85020-T15P	PR 7616	SDR T15P
DS15	DSN 150412	MSD 8015-T20P	UD 16	SR 86025-T20P	PR 9118	SDR T20P
DS19	DSN 190412	MSD 1015-T20P	UD 19	SR 86025-T20P	PR 9118	SDR T20P

### External turning - clamping system D



ISO	R/L	Dimensions						$\lambda_s^\circ$	$\gamma_0^\circ$	kg	Spare parts	Insert
		h	b	f	$l_1$	$l_{2max}$						
DTGNR/L 2020 K 16	●/●	20	20	25	125	25		-6	-6	0,4	DT16	TNM. 1604..-E
DTGNR/L 2525 M 16	●/●	25	25	32	150	25		-6	-6	0,7	DT16	TNM. 1604..-E
DTGNR/L 2525 M 22	●/●	25	25	32	150	30		-6	-6	0,7	DT22	TNM. 2204..-E
DTGNR/L 3225 P 22	●/●	32	25	32	170	30		-6	-6	1,0	DT22	TNM. 2204..-E

#### SPARE PARTS:

Spare parts	Shim	Shim screw	Clamp	Screw	Spring	Screwdriver
DT16	DTN 160312	MSD 5008-T09P	UD 09	SR 85017-T09P	PR 6912	SDR T09P
DT22	DTN 220612	MSD 6312-T15P	UD 12	SR 85020-T15P	PR 7616	SDR T15P

### External turning - clamping system D



ISO	R/L	Dimensions						$\lambda_s^\circ$	$\gamma_0^\circ$	kg	Spare parts	Insert
		h	b	f	$l_1$	$l_{2max}$						
DWLNR/L 2020 K 08	●/●	20	20	25	125	35		-6	-6	0,4	DW08	WNM. 0804..-E
DWLNR/L 2525 M 08	●/●	25	25	32	150	35		-6	-6	0,7	DW08	WNM. 0804..-E
DWLNR/L 3225 P 08	●/●	32	25	32	170	35		-6	-6	1,0	DW08	WNM. 0804..-E

#### SPARE PARTS:

Spare parts	Shim	Shim screw	Clamp	Screw	Spring	Screwdriver
DW08	DWN 080416	US 4008-T15P	UD 12	SR 85020-T15P	PR 7616	SDR T15P

### Internal turning - clamping system D

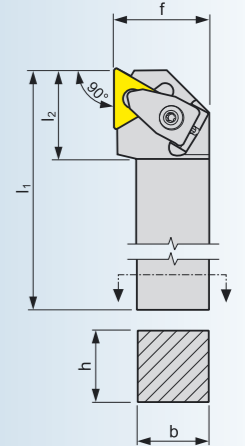


ISO	R/L	Dimensions						$\lambda_s^\circ$	$\gamma_0^\circ$	kg	Spare parts	Insert	
		dg7	f	$l_1$	h	b	$D_{min}$						
A25T-DCLNR/L 09	●/●	25	17	300	23	23	32		-11	-6	0,95	DCI09	CNM. 0903..
A25T-DCLNR/L 12	●/●	25	17	300	23	23	32		-11	-6	0,95	DCI12	CNM. 1204..
A32U-DCLNR/L 12	●/●	32	22	350	30	30	40		-11	-6	1,80	DCI12	CNM. 1204..
A40V-DCLNR/L 12	●/●	40	27	400	37	37	50		-14	-6	3,30	DC12	CNM. 1204..

#### SPARE PARTS:

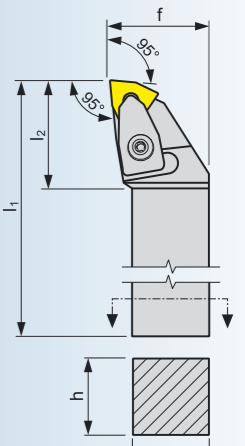
Spare parts	Shim	Shim screw	Clamp	Screw	Spring	Screwdriver
DCI09	DCI 090308	US 3007-T09P	UD 09	SR 85017-T09P	PR 6912	SDR T09P
DCI12	DCI 120310	US 4008-T15P	UD 12	SR 85020-T15P	PR 7616	SDR T15P
DC12	DCN 120612	MSD 6312-T15P	UD 12	SR 85020-T15P	PR 7616	SDR T15P

## DTGNR/L



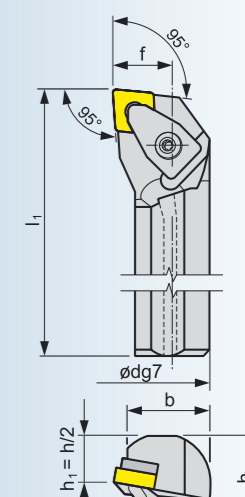
$\gamma_0^\circ$  - cutting edge inclination  
 $\lambda_{s0}^\circ$  - tool orthogonal rake

## DWLNR/L



$\gamma_0^\circ$  - cutting edge inclination  
 $\lambda_{s0}^\circ$  - tool orthogonal rake

## DCLNR/L



$\gamma_0^\circ$  - cutting edge inclination  
 $\lambda_{s0}^\circ$  - tool orthogonal rake